

# OUTSULATION<sup>®</sup> PLUS MD OVER SECUROCK<sup>®</sup> EXOAIR<sup>®</sup> 430 WALL ASSEMBLY

Pre-Applied  
Air Barrier



Built-In

CI

Design  
Flexibility

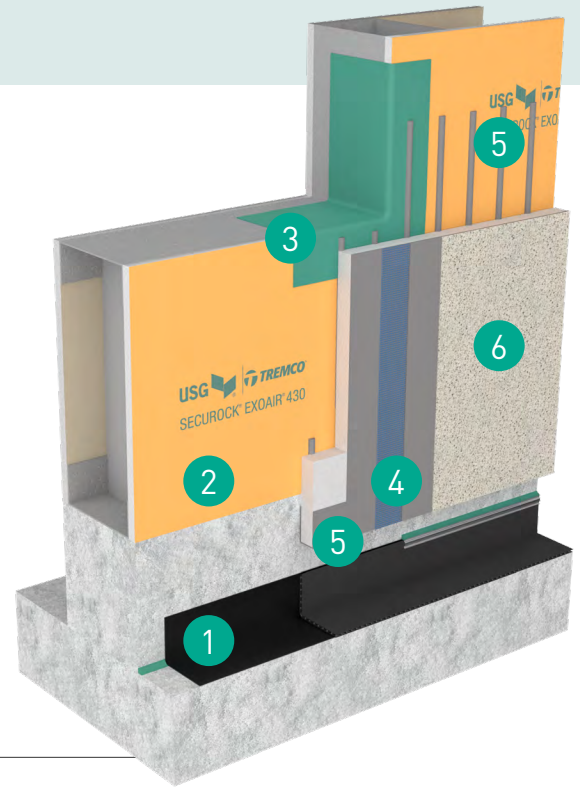


## Overview

A comprehensive, insulated whole wall assembly with a premium air/water barrier membrane that can be finished with any combination of colors, textures and finishes, resulting in an energy efficient, aesthetically appealing and durable structure.

The assembly incorporates a waterproofing system, an exterior insulation and finish system (EIFS) with moisture drainage, a high-performing air/water-resistive barrier, continuous insulation (CI) and tie-ins at all transitions and penetrations. These combined systems deliver a cost effective, low maintenance, attractive building solution for all project types.

Tested for compatibility at all connection points, this assembly creates a complete, weatherproof building envelope which is warranted in a single document.



Feature	Benefit
Pre-Applied Sheathing/Air Barrier	Provides for a uniform membrane application, eliminating variables associated with field application and weather that result in consistent performance and project time savings
Built-In CI	Enhanced insulation improves building energy efficiency
Unlimited Design Flexibility	Customization to create a wide variety of designs, finishes, colors and textures
Comprehensive Drainage, Air Barrier, & Waterproofing	One whole wall system incorporates protection against the effects of air, water, thermal and vapor transmission
Compatibility Tested Assembly	Lowers cost, labor and risks by reducing steps, manufacturers, and components required for the project
NFPA 268 and 285 Compliant	Limits potential spread of fire to help ensure buildings and their occupants are safe
Integrated Assembly Design	Speeds construction times to keep projects on schedule

## Components

1	Tremco Below-Grade Waterproofing Tied-In to Air Barriers at Grade
2	Tremco Securock ExoAir 430 Air/Water-Resistive Barrier
3	Tremco Sealant & Flashing Products Tied-In at all Rough Openings, Corners, Joints, Penetrations, Transitions at Windows, Connections and at Roof Parapets.
4	Dryvit Outsulation Plus MD Continuous Insulation System
5	Moisture Drainage System
6	Dryvit Texture, Color or Specialty Finish



Construction Products Group

# OUTSULATION® PLUS MD OVER SECUROCK® EXOAIR® 430 WALL ASSEMBLY

TESTING CATEGORY	PERFORMANCE TESTS	WHY IT MATTERS
Air and Water Resistance	<ul style="list-style-type: none"> <li>Water Resistance &amp; Penetration</li> <li>Air Leakage</li> <li>Nail Sealability</li> <li>Weathering/UV Exposure</li> </ul>	<ul style="list-style-type: none"> <li>Seamlessly protects sheathing or substrate from incidental moisture and eliminates air infiltration</li> <li>Protects structure from a wide range of harsh and challenging weather conditions</li> </ul>
Durability	<ul style="list-style-type: none"> <li>Abrasion Resistance</li> <li>Impact Resistance</li> <li>Freeze-Thaw</li> <li>Water &amp; Mildew Resistance</li> <li>Drainage Efficiency</li> </ul>	<ul style="list-style-type: none"> <li>Allows drainage of incidental moisture on the wall for damage protection</li> <li>Available with hydrophobic (HDP) or proven mildew resistance (PMR) technologies</li> <li>Has exceptional elongation and crack-bridging waterproofing characteristics below grade, guarding against movement that creates openings</li> </ul>
Structural Strength	<ul style="list-style-type: none"> <li>Impact Resistance</li> <li>Transverse Wind Load</li> <li>Material Strength</li> <li>Sealant Adhesion and Cohesion</li> </ul>	<ul style="list-style-type: none"> <li>Resists and can be warranted against punctures (with HDCI finish system)</li> <li>Protects against stress and potential debris impact from high winds</li> <li>Maintains the structural integrity of the system</li> <li>Evaluated for strong tensile adhesion between all system components</li> </ul>
Fire Performance	<ul style="list-style-type: none"> <li>NFPA 268 Compliant</li> <li>NFPA 285 Compliant</li> </ul>	<ul style="list-style-type: none"> <li>Dryvit's non-combustible, ignition resistant finish protects exterior of wall assembly against lateral (suite-to-suite) and vertical (floor-to-floor) flame propagation</li> </ul>

## Ready to Get Started with a Wall Assembly?

If you're interested in making your next project easier with a code-compliant, ready-to-specify wall system, contact your local Tremco or Dryvit representative at →

Dryvit/Tremco

[tremcosealants.com/find-your-sales-rep](https://tremcosealants.com/find-your-sales-rep)  
800.321.7906

Tremco CPG Inc. | 3735 Green Road | Beachwood, OH 44122 | 800.556.7752 | [tremcocpg.com](https://tremcocpg.com)

Tremco Construction Products Group (CPG) brings together Tremco CPG Inc. and its Dryvit and Nudura brands; Willseal; Prebuck LLC; Tremco Barrier Solutions, Inc.; Weatherproofing Technologies, Inc. and its Pure Air Control Services and Canam Building Envelope Specialists offerings; and Weatherproofing Technologies Canada, Inc.



Construction Products Group

Use of the ® symbol indicates registration with the US Patent & Trademark Office and the Canadian Intellectual Property Office.