

FEDDERLITE® / FEDDERLITE® M PREFABRICATED PANEL WALL ASSEMBLY

Fast Panel
Installation



Built-In

CI

Design
Flexibility

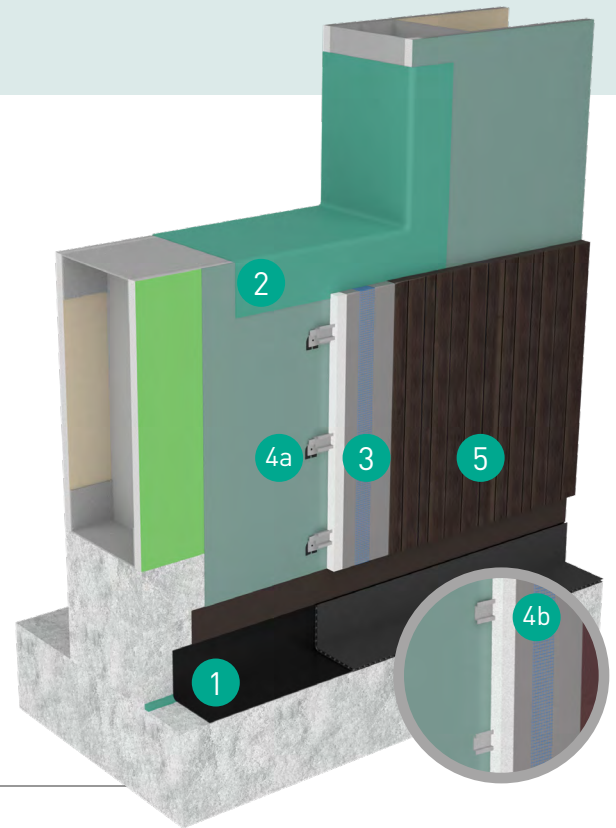


Overview

A comprehensive, whole wall assembly built with proprietary, cost-effective, prefabricated panel systems, speeding and simplifying the construction of new or restoration projects.

This wall assembly incorporates waterproofing and air/water-resistant barrier systems with lightweight, prefabricated Dryvit® Fedderlite® and Fedderlite® M wall panels with continuous insulation (CI). This results in strong, resilient, and insulated panels that can be built with a wide range of aesthetic finish options to meet any design needs.

These assemblies are fully tested to meet existing building codes and provide extraordinary energy efficiency. They are tested for compatibility at all connection points to create a complete, weatherproof building envelope, and are warranted in a single document.



| Feature | Benefit |
|--|---|
| Prefabricated Wall Panel Construction | Reduces jobsite complexity, simplifies installation, speeds construction time, lowers labor costs |
| Ideal for Restoration Projects | Allows for adaptive reuse of existing structures |
| Built-In CI | Provides for operational energy efficiencies and environmental sustainability |
| Comprehensive Drainage, Air Barrier, & Waterproofing | One whole wall system incorporates protection against the effects of air, water, thermal and vapor transmission |
| Fire-Rated Systems | Limits potential spread of fire to help ensure buildings and their occupants are safe |
| Compatibility-Tested Assembly | Lowers cost, labor and risks by reducing steps, manufacturers, and components required for the project |
| Integrated Assembly Design | Speeds construction times to keep projects on schedule |

Components

| | |
|----|--|
| 1 | Tremco Below-Grade Waterproofing Tied-In to Air Barriers at Grade |
| 2 | Dryvit/Tremco Air Barriers and Sealants Tied-in to All Transitions at Windows, Corners, Joints, Penetrations, Connections and at Roof Parapets |
| 3 | Dryvit Fedderlite and/or Fedderlite M Prefabricated Exterior Wall Insulation and Finish System Panels |
| 4a | Rail Attachment System (<i>Fedderlite M</i>) or |
| 4b | Mounting Plates (<i>Fedderlite</i>) |
| 5 | Dryvit Texture, Color or Specialty Finish |

FEDDERLITE® / FEDDERLITE® M PREFABRICATED PANEL WALL ASSEMBLY

| TESTING CATEGORY | PERFORMANCE TESTS | WHY IT MATTERS |
|--------------------------|---|--|
| Air and Water Resistance | <ul style="list-style-type: none"> Air Leakage Water Resistance Water Absorption Water Penetration Drainage Efficiency | <ul style="list-style-type: none"> Protects structure from a wide range of harsh and challenging weather conditions Regulates air & thermal movement to reduce energy costs |
| Durability | <ul style="list-style-type: none"> Freeze/Thaw Mold Resistance Abrasion Resistance Salt Spray Resistance Accelerated Weathering | <ul style="list-style-type: none"> Provides for high performance over the life of the building. Reduces overall maintenance costs caused by environmental factors |
| Structural Strength | <ul style="list-style-type: none"> Impact Resistance Tensile Strength Low Temp Flexibility Elongation | <ul style="list-style-type: none"> Protects against stress and potential debris impact from high winds Materials withstand movement to retain their resilience Maintains the structural integrity of the system |
| Fire Performance | <ul style="list-style-type: none"> NFPA 285 and 268 Compliance Fire Resistance Ignitability Surface Burning Characteristics Fire Propagation | <ul style="list-style-type: none"> Reduced potential for upward spread of fire through the wall. Protects exterior of wall assembly against lateral (suite-to-suite) and vertical (floor-to-floor) flame propagation |

Ready to Get Started with a Wall Assembly?

If you're interested in making your next project easier with a code-compliant, ready-to-specify wall system, contact your local Tremco or Dryvit representative at →

Dryvit/Tremco

tremcosealants.com/find-your-sales-rep
 800.321.7906

Tremco CPG Inc. | 3735 Green Road | Beachwood, OH 44122 | 800.556.7752 | tremcocpg.com

Tremco Construction Products Group (CPG) brings together Tremco CPG Inc. and its Dryvit and Nudura brands; Willseal; Prebuck LLC; Tremco Barrier Solutions, Inc.; Weatherproofing Technologies, Inc. and its Pure Air Control Services and Canam Building Envelope Specialists offerings; and Weatherproofing Technologies Canada, Inc.



Construction Products Group

Use of the ® symbol indicates registration with the US Patent & Trademark Office and the Canadian Intellectual Property Office.