

DRYVIT® FINISHES OVER NUDURA® ICF WALL ASSEMBLY

R-Value 24+



Minimum
STC 50+



Design
Freedom

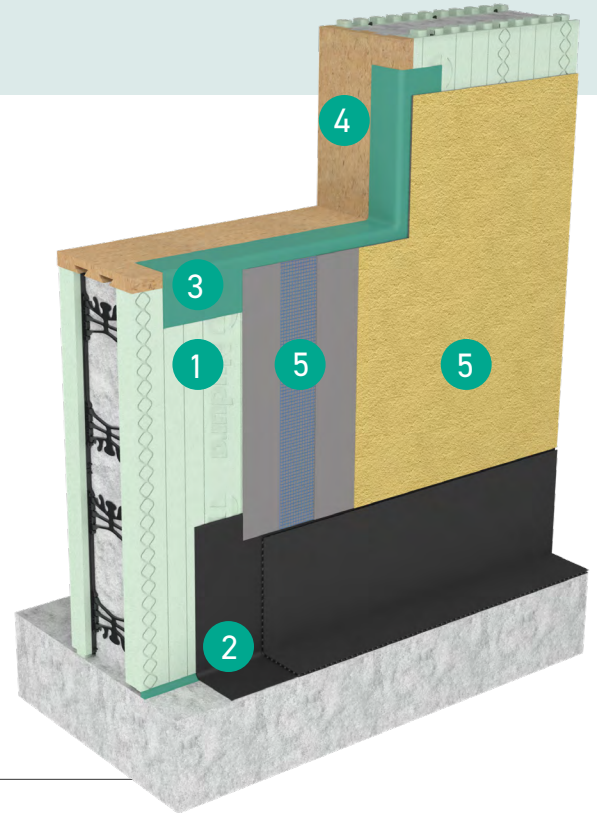


Overview

A whole wall assembly built with the maximum resiliency and energy efficiency of Nudura Insulated Concrete Forms (ICF) — lowering a building's operational energy demands by up to 58% — and finished with any combination of Dryvit colors, textures and finishes for a beautiful, durable structure built for the long term.

Beginning with ICFs from the foundation to the roof line — and incorporating waterproofing and tie-ins at all transitions and penetrations — the system creates a complete, weatherproof, air-tight building envelope. In addition, Nudura ICF structures are strong and can be engineered to withstand winds of more than 250 mph (402 km/h).

Tested for compatibility at all connection points, the system carries a single-source warranty in a single document.



| Feature | Benefit |
|----------------------------|---|
| ICF Construction | Improves strength and disaster resiliency for safer structures, especially critical in tornado or hurricane-prone areas that require design in accordance with ICC 500, withstanding winds of up to 250 mph (402 km/h). |
| R-value of 24+ | Maximizes energy efficiency for reduced heating and cooling costs and faster ROI for building and home owners |
| Minimum STC 50+ (Rw51)** | Minimizes sound transmission for quieter environments such as hotels, hospitals, homes and schools |
| Compatibility-Tested | Reduces cost and labor by reducing extra steps, components and subcontractors required for the project |
| NFPA 285 and 286 Compliant | Limits potential spread of fire to help ensure buildings and their occupants are safe |
| Integrated Design | Speeds construction times to keep projects on schedule |

Components

| | |
|---|--|
| 1 | Nudura Insulated Concrete Forms (ICF) |
| 2 | Tremco Below-Grade Waterproofing tied into Finish System at Grade |
| 3 | Dryvit/Tremco Sealants and Flashings for all Transitions, Penetrations and Parapets |
| 4 | Prebuck Pre-Engineered Window Bucking and Parapet Components |
| 5 | Dryvit Finishing System with Reinforcing Base Coat, Mesh, and Texture, Color or Specialty Finish (<i>Sandpebble® texture shown in color #182 Pale Ale</i>) |



Construction Products Group

**Per ASTM E90 test specifications. STC 50 (Rw51) rating based on minimum 6" (152 mm) Nudura form and concrete core thickness or larger installed with code compliant finishes mounted both side of wall assembly in accordance with Nudura Installation procedure

DRYVIT® FINISHES OVER NUDURA® ICF WALL ASSEMBLY

| TESTING CATEGORY | PERFORMANCE TESTS | WHY IT MATTERS |
|---------------------|---|---|
| Weather Resistance | <ul style="list-style-type: none"> Water Resistance & Penetration Air Leakage Nail Sealability Weathering/UV Exposure | <ul style="list-style-type: none"> Seamlessly protects sheathing or substrate from incidental moisture and eliminates air infiltration. Protects structure from a wide range of harsh and challenging weather conditions |
| Durability | <ul style="list-style-type: none"> Abrasion Resistance Impact Resistance Freeze-Thaw Water & Mildew Resistance | <ul style="list-style-type: none"> Available with hydrophobic (HDP) or proven mildew resistance (PMR) technologies Has exceptional elongation and crack-bridging waterproofing characteristics below grade, guarding against movement that creates openings |
| Structural Strength | <ul style="list-style-type: none"> Impact Resistance Transverse Wind Load | <ul style="list-style-type: none"> Protects against stress and potential debris impact Maintains the structural integrity of the system Strong tensile adhesion between all components |
| Fire Performance | <ul style="list-style-type: none"> 4-Hour Fire Resistance (UL-263) NFPA 268 Compliant NFPA 285 Compliant | <ul style="list-style-type: none"> 6-inch (152mm) Nudura core ICF & greater provides minimum 4 hour fire resistance/UL Listing (U930) (UCL W012) for both exterior load bearing walls and interior walls between suites Dryvit's non-combustible, ignition resistant finish protects exterior of wall assembly against lateral (suite-to-suite) and vertical (floor-to-floor) flame propagation |
| Sound Transmission | <ul style="list-style-type: none"> Sound Reduction Index | <ul style="list-style-type: none"> Low noise penetration reduces stress and anxiety, resulting in a quieter building environment and enhanced comfort Can improve privacy, productivity and focus Improves sound quality for studios and theaters |

Ready to Get Started with a Whole Wall System?

If you're interested in making your next project easier with a code-compliant, ready-to-specify wall system, contact your local Tremco, Nudura or Dryvit representative at →

Nudura nudura.com/company/team
866.468.6299

Dryvit/Tremco tremcosealants.com/find-your-sales-rep
800.321.7906

Tremco CPG Inc. | 3735 Green Road | Beachwood, OH 44122 | 800.556.7752 | tremcocpg.com

Tremco Construction Products Group (CPG) brings together Tremco CPG Inc. and its Dryvit and Nudura brands; Willseal; Prebuck LLC; Tremco Barrier Solutions, Inc.; Weatherproofing Technologies, Inc. and its Pure Air Control Services and Canam Building Envelope Specialists offerings; and Weatherproofing Technologies Canada, Inc.



Construction Products Group

Use of the ® symbol indicates registration with the US Patent & Trademark Office and the Canadian Intellectual Property Office.