



Construction Products Group





Roofing Systems

Air & Vapor Barriers

Cladding

Glazing Systems

Engineered Framing System

Sealants & Adhesives

Maintenance, Services & Safety

Waterproofing & Traffic Coatings

Insulated Concrete Forms

INTRODUCING TREMCO CONSTRUCTION PRODUCTS GROUP

The Power of One

Your source for new construction, renovation or restoration.
Commercial, residential or industrial. In-field or in-plant.

Tremco Construction Products Group brings together Tremco CPG Inc. and its Dryvit and Nudura brands; Willseal; Prebuck LLC; Tremco Barrier Solutions, Inc.; Weatherproofing Technologies, Inc. and its Pure Air Control Services and Canam Building Envelope Specialists offerings; and Weatherproofing Technologies Canada, Inc.

Structures with Tremco CPG systems are easier to build and maintain, virtually impervious to the elements, and can provide any look desired. Six-sided solutions from Tremco CPG companies deliver demonstrable performance at the lowest possible life-cycle cost, and stop leaks before they happen through ongoing maintenance programs. Building owners gain the peace of mind that comes with industry-leading system warranties — all from a single source platform.

Why One is More

Speed construction or restoration. Simplify installation. Extend the construction season. A single-source building envelope means more for everyone — more satisfied contractors, more comfortable occupants or tenants, and more efficient structures and cost-effective operation for owners.



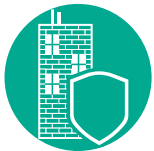
Faster Construction Time

Lightweight, fast-curing and prefabricated products mean less occupant disruption, faster return to service, less revenue lost — and no call-backs.



Any Look You Want

A wide range of colors and finishes like brick, granite, metals, stucco and more provide maximum flexibility in your roof and façade aesthetic.



Stronger and More Resilient

Our systems are designed for maximum durability, many with service lives far surpassing that of competing systems.



Leak-Free Performance

Products provide maximum protection from air, moisture and thermal infiltration — and are performance tested in our one-of-a-kind Sustainable Building Solutions Test Facility.



Cost Effective for the Long Term

A broad range of products can fit any project budget — but our energy efficiency and maintenance solutions can also help you ensure cost-effective ownership and operation for the long term.



Better Insulated

Industry-leading brands provide solutions for more efficient building construction and operation, and exceed strict energy codes for insulation.



One Point of Contact

Our products and systems are backed by industry-leading warranties — all from a single point of contact. We can also help with everything from asset management to diagnostics to installer training.

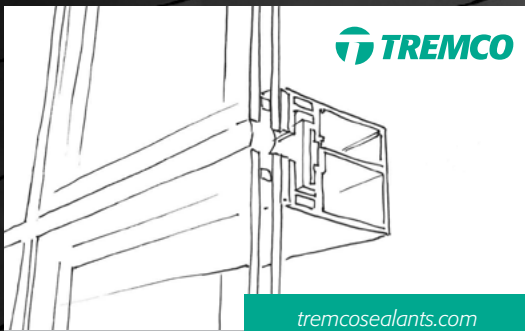


Leading Edge Sustainability

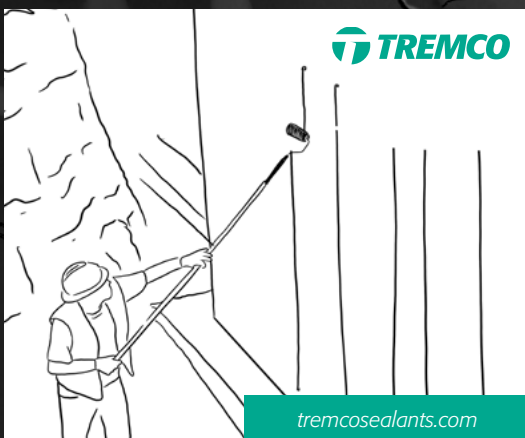
Our building solutions help you meet green building standards like Net Zero, Living Building Challenge, Passive House and more.

>> For more information, visit tremcocpg.com

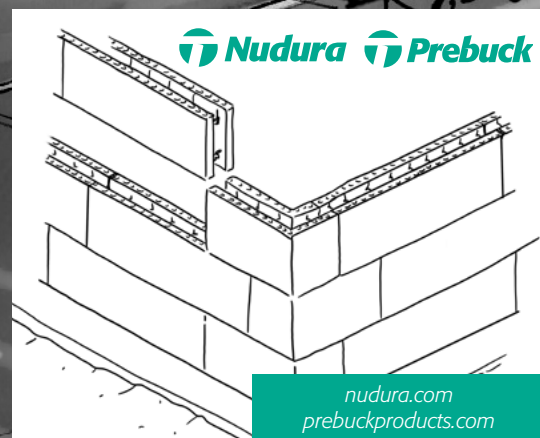
The strongest building envelope on the market, from the only group providing industry-leading brands in every category



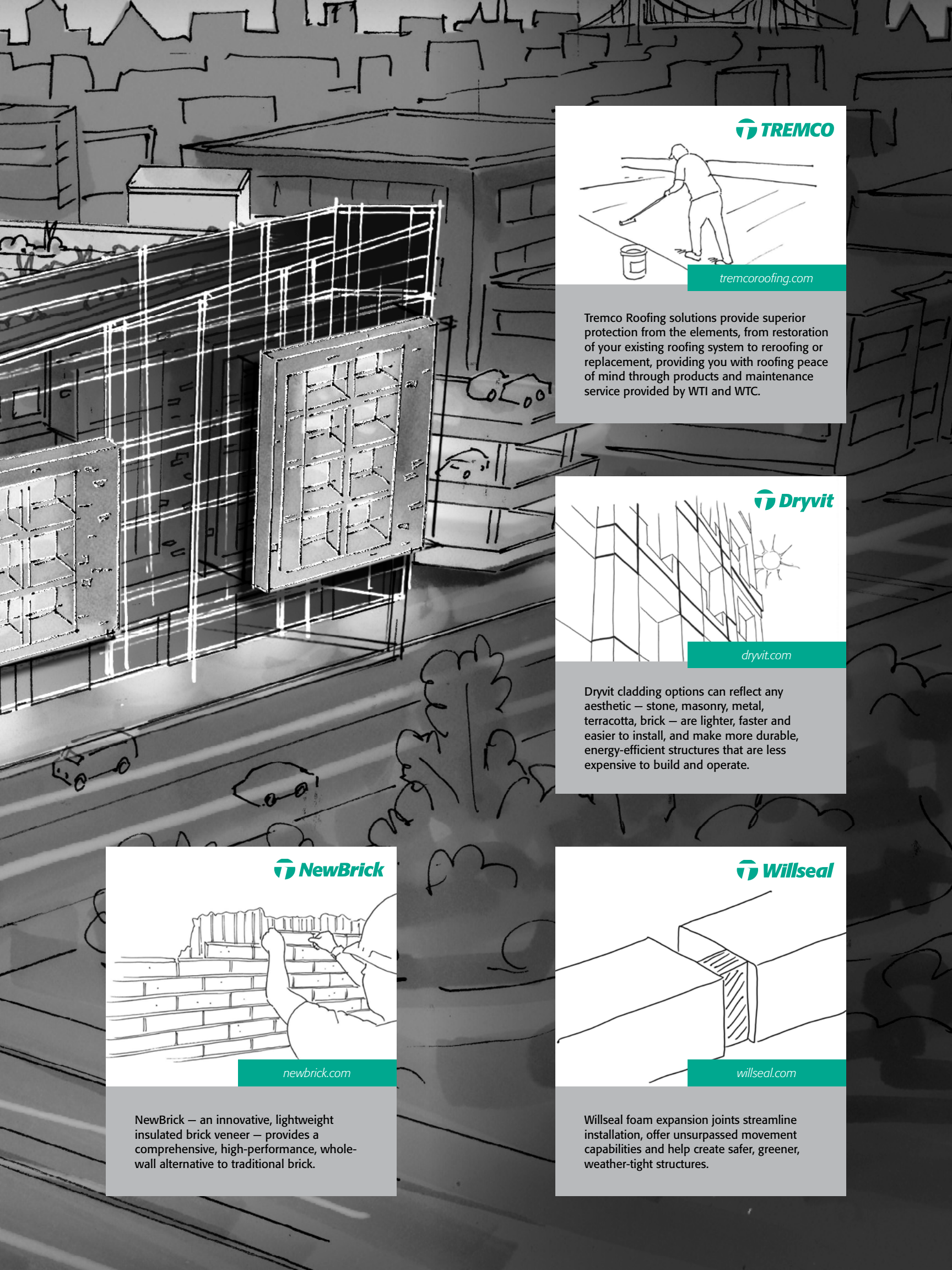
Tremco commercial glazing sealants, gaskets and tapes integrate with air barriers and transition assemblies at the window-to-wall interface, creating an air- and water-tight wall proven in demanding conditions like extreme temperatures, seismic activity and hurricane zones.



Tremco's industry-leading below-grade waterproofing and revolutionary traffic coating technologies ensure watertight, durable foundations and decks.

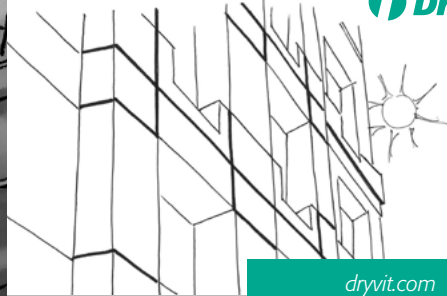


Nudura Insulated Concrete Forms (ICF) for foundations and wall systems are stronger, better insulated and can be installed faster than traditional framing methods. Prebuck engineered framing systems are designed for direct contact with concrete and will not cup, twist or warp.



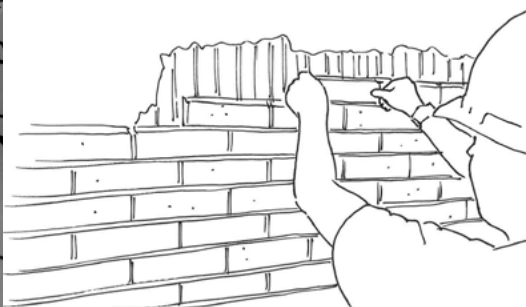
tremcoroofing.com

Tremco Roofing solutions provide superior protection from the elements, from restoration of your existing roofing system to reroofing or replacement, providing you with roofing peace of mind through products and maintenance service provided by WTI and WTC.



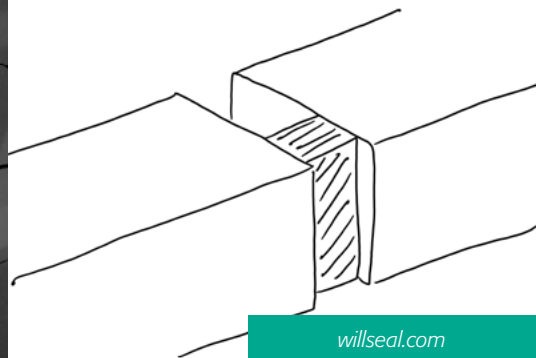
dryvit.com

Dryvit cladding options can reflect any aesthetic – stone, masonry, metal, terracotta, brick – are lighter, faster and easier to install, and make more durable, energy-efficient structures that are less expensive to build and operate.



newbrick.com

NewBrick – an innovative, lightweight insulated brick veneer – provides a comprehensive, high-performance, whole-wall alternative to traditional brick.



willseal.com

Willseal foam expansion joints streamline installation, offer unsurpassed movement capabilities and help create safer, greener, weather-tight structures.

FROM FOUNDATION WORK EARLY IN CONSTRUCTION

With the ability to warrant all waterproofing across the entire 236,000 ft² project, Tremco was the supplier of choice.

Obermeyer Place
Aspen, Colorado

Tremco Below-Grade Waterproofing



TO ROOF RESTORATION ON DECADES-OLD STRUCTURES

Significant cost savings vs. reroofing, while also helping to increase energy efficiency and sustainability.

Ford Field
Detroit, Michigan

Tremco AlphaGuard BIO Roofing System



Below-grade waterproofing, sealants, 13 roof replacements, 3 roof renovations, 4 infrared drone scans, and ongoing maintenance. All from Tremco CPG.

The Field Museum
Chicago, Illinois

Tremco Below-Grade Waterproofing
Tremco Roofing Systems, Diagnostics and Maintenance



The owner maximized building efficiency — and completely modernized the aesthetic at the same time.

500 Pacific Ave.
Bremerton, Washington

Dryvit Air Barriers and Prefabricated Panels
Tremco Sealants



**ON SOME OF THE WORLD'S
MOST ICONIC BUILDINGS**



The unmatched performance of Tremco sealants and extrusions helped complete the façade of this iconic 7-star hotel.

Burj Al Arab
Dubai, United Arab emirates

Tremco Sealants and Extrusions



**TO THE HOUSE
ACROSS THE STREET**



Tremco helped the builder drop the ACH from 3.64 to 1.8, and increase energy efficiency by 40%.

Private Residence

Tremco Weather-Resistant Barriers



TREMCO CONSTRUCTION PRODUCTS GROUP IS THERE.



NewBrick helped stop the leaks, boosted the R-value and matched the other campus buildings perfectly.

Owens Community College
Perrysburg, Ohio

NewBrick Cladding Systems

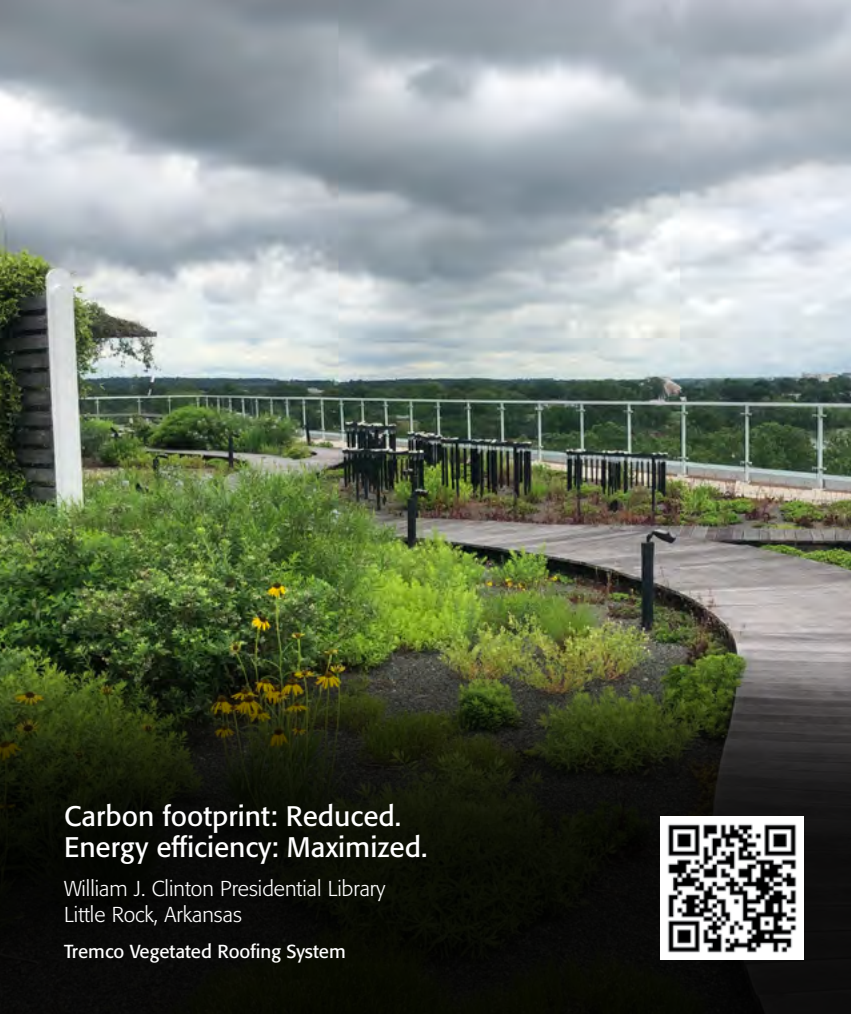


3 stories of Nudura ICF gave the extreme strength and perfect alignment that this breathtaking oceanfront project demanded.

Sookepoint Ocean Cottage Resort
Sookepoint, British Columbia

Nudura Insulated Concrete Forms





**Carbon footprint: Reduced.
Energy efficiency: Maximized.**

William J. Clinton Presidential Library
Little Rock, Arkansas

Tremco Vegetated Roofing System



**Air leakage and structural wind
load test passed with flying colors.**

Camp Pendleton Naval Hospital
San Diego, California

Tremco Air Barriers, Sealants and Transitions



**54,000 ft² of sheathing and air
barriers installed in 4 months of rain
and cold? Of course! It's for the kids.**

Arkansas Children's Hospital
Springdale, Arkansas

Tremco Sealants and Air Barriers



**WTI and Tremco built a 7-year repair
and restoration plan to spread cost
and help the operating budget.**

Palmetto Health Garage
Columbia, South Carolina

WTI Repair and Maintenance Services, Tremco Roofing,
Tremco Traffic Coatings and Sealants





"Almost unheard of in the Texas heat!"
The original Tremco gaskets lasted 35+ years. (And they chose Tremco again.)

Bank of America Plaza
Dallas, Texas

Tremco Glazing Gaskets and Sealants



Category five hurricane.
155 mph winds. Still standing.

Private Residence
Mexico Beach, Florida

Nudura Insulated Concrete Forms



AND AN UNRIVALED TRACK RECORD OF SUCCESS PROVES IT.



How do you close in a 278-unit luxury high-rise in the dead of a Minnesota winter? With Dryvit panelization.

Melrose Apartments
Minneapolis, Minnesota

Dryvit Panelization Systems



Complex designs and directional changes are inherent in modern stadiums. Willseal pre-compressed sealants solved movement concerns, keeping concourses dry.

Notre Dame Stadium
South Bend, Indiana

Willseal Expansion Joints



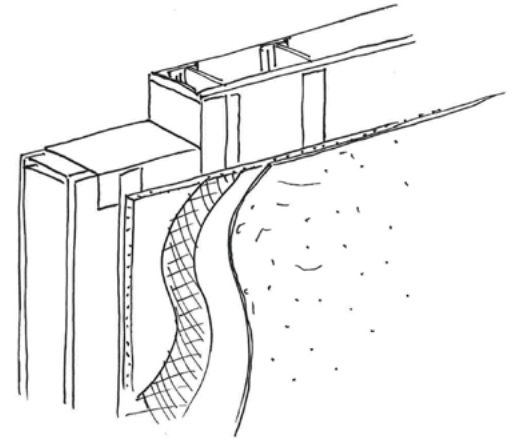


Comprehensive Building Envelopes, at the Margins

Beyond the more conspicuous building envelope elements – the glass, concrete, brick and steel – is where the true measure of your structure’s performance lies. You have a roof. A foundation. A façade. Fenestration.

But do you have a comprehensive building envelope?

Solutions from Tremco CPG companies are designed to provide construction integrity at all these critical (but often marginalized) connection points: penetrations, corners, and transitions like roof-to-wall, window-to-wall, foundation-to-wall, and deck-to-wall.



You could say we’re exceptional at the margins.

And the simple fact remains that these ‘margins’ are where the majority of air, water and vapor infiltration occurs. A continuous, compatible system can reduce building air infiltration by 60 to 100% – representing a potential gas savings of more than 40%, and electrical savings of more than 25%.¹

Our products are designed for maximum waterproofing, thermal, sound, and air-tightness, and systems are rigorously tested for performance and compatibility at our one-of-a-kind Sustainable Building Solutions Test Facility. This state-of-the-art facility in Cleveland allows for testing of air, moisture and thermal infiltration/exfiltration in building envelopes, pushing systems beyond ASTM standards to help avoid energy loss, structural deterioration and poor indoor air quality.

A True Partner, Invested in the Long-Term Performance of Your Properties

Never ones to simply sell product and wish you luck, the Tremco CPG companies have technical experts in every major market across the country – there expressly to help you with specification development, appropriate system selection, installation sequencing, appropriate tie-ins and more.

We’re there to help ensure the long-term performance of your structure, assist with on-site testing, and even help train installers in the field.

Lean on our expertise for:

- Preventive Maintenance Plans
- Specialized Cleaning and Restoration Programs
- Asset Mapping and Management
- Functional Mock-Up Creation
- Diagnostics and Inspections
- General Contracting
- Industry Education
- Design Engineering Services
- Safety Products
- On-Site or In-Lab System Testing
- Hands-On Installer Training
- Product Procurement Programs

¹ The National Institute of Standards and Technology (2005) *Investigation of the Impact of Commercial Building Envelope Airtightness on HVAC Energy Use* (Report No. NISTIR 7238)

tremcocpg.com



Use of the ® symbol indicates registration with the US Patent and Trademark Office and the Canadian Intellectual Property Office.
©Tremco CPG Inc. 2024

0224.TCPGOBRO